

MRP: ₹ 17,450.00 (Incl. of all taxes)



Available Color Shades



Matte Black

Matte White

# Neon SHOWER PANEL



Rainfall Spray

Mist Spray

The Power Of

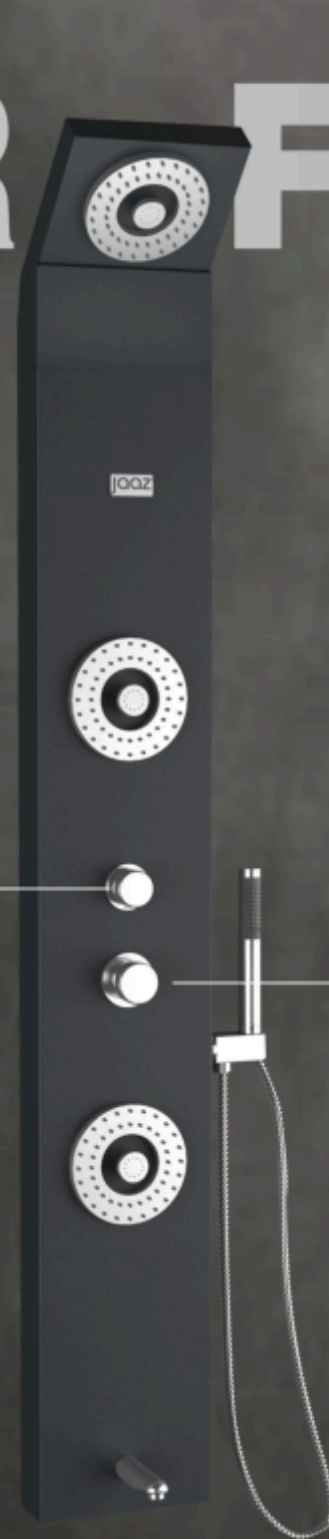
## 2-WAY FUNCTION

Massage Body Jets

## DIVERTER FUNCTION

A Key Switch 5 Function

- Head Shower
- Massage Jet
- Hand Shower
- Spout



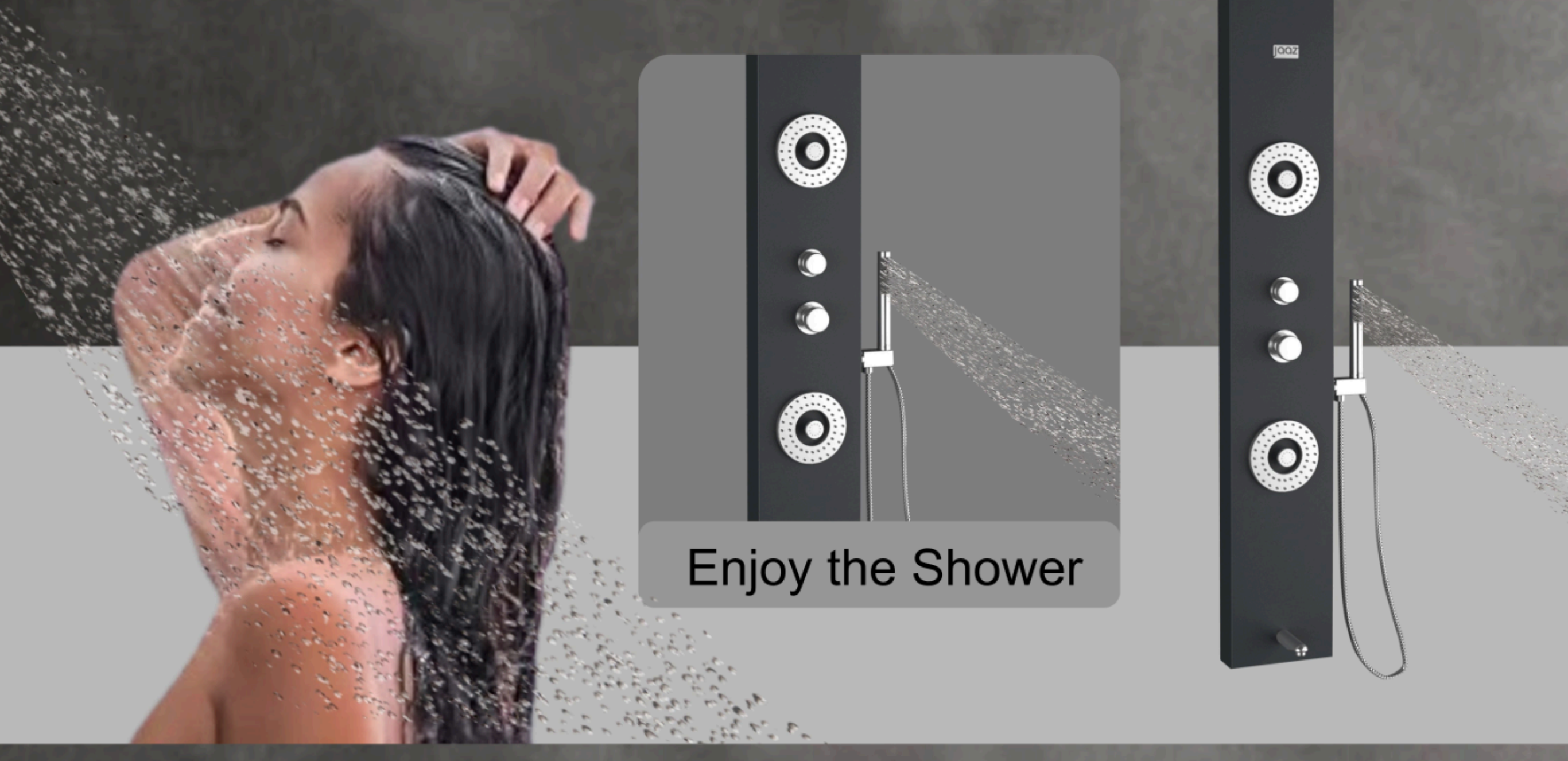
Hot & Cold Water Mixer



On-Off Mixer

## HAND SHOWER

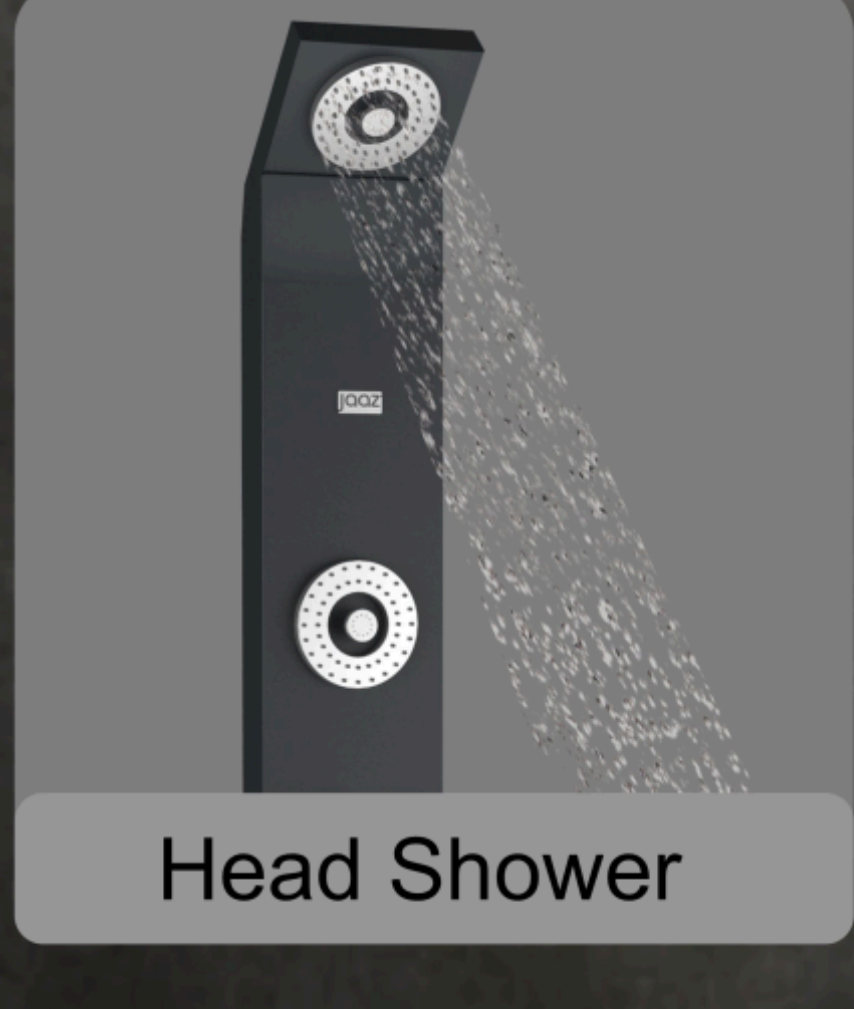
Silicone Nozzle Easy to Clean



Enjoy the Shower

## RAINFALL DELIGHT

Immerse yourself in pure bliss every day with Jaz's Neon Shower's Rainfall Mode



Head Shower

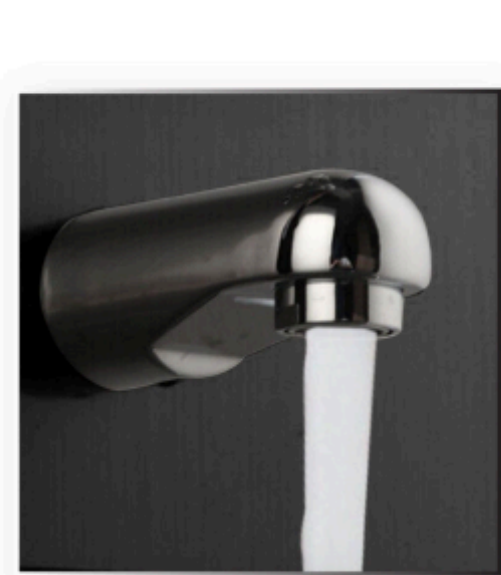


## SPOUT FAUCET

Indulge in a lavish foam with the distinctive water innovation of our spout faucet



**Coin-Aerator**  
From Neoperl Aerator (Germany)



**Foam Flow Spout**



### NEON SHOWER PANEL

The Neon Shower Panel is a sophisticated addition to any bathroom, offering a range of features designed for an enhanced and luxurious shower experience.

### TECHNICAL DETAILS

- 1st Manufacturer of Shower Panel in India Since 2009 | Warranty: 3 Years
- Maintenance Free Coin Aerator for Spout of Neoperl (Germany). We use Vernet (France) for Thermostatic Mixer Cartridge & Sedal (Spain) for Diverter Cartridge.
- Five Shower Function : 1. Rain Shower 2. Mist (95% water saving - Eco Friendly) shower 3. Hand Shower (80 Nozzle) 4. Two Massage Jets with 2 function (Massage and Mist (95% water saving - Eco Friendly) shower) 5. Foam Flow Spout.
- Served at 750 + Location of India | 15000 + Happy Customer
- Pressure Pump Required Capacity – 0.5 (hp i.e. Horse power) for better performance.

### CARE & CLEANING TIPS

- Cleaning: Use only water for cleaning the surface; avoid using any chemical cleaners.
- Water Caution: Avoid exposure to High TDS (Total Dissolved Solids) water. The TDS Level Recommended by WHO, however it should be less than 300 ppm (parts per million)

### POLICY

- Installation Guide [Know More](#)
- Customer Support [Know More](#)
- Return Policy [Know More](#)
- Warranty [Know More](#)

### HOW TO INSTALL NEON

We recommend consulting professional help if you are unfamiliar with installing bathroom fixtures and/or plumbing. For these instructions, it is assumed that the water supply lines are in place behind the finished wall and are directly accessible for shower panel installation

[▶ Installation Video](#)

Order Now

Call us

Need Help? Chat with us

Buy Now At

### FOLLOW US

To stay updated with all that's happening in Jaz, connect with us

